

# Difficult to diagnose and pin point which organism cause infection in normal field condition?

Don't worry.....  
We have an answer....  
India's First and Best.....

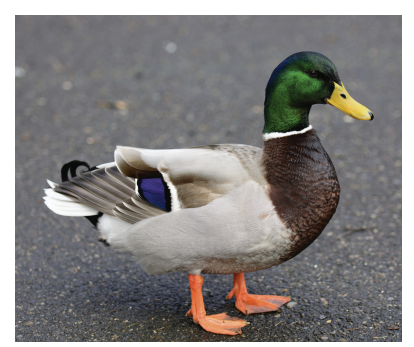
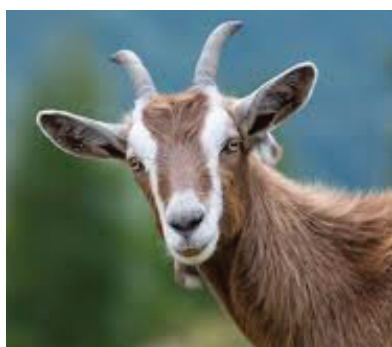
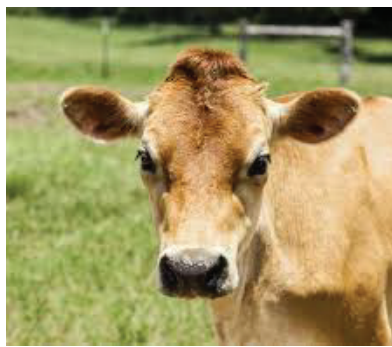


Enro TZ Bolus ,Enro TZ Tablets, Enro TZ Syrup 100ml

## Enro-TZ

A powerful antibacterial with Triple action

30-40% of circulating Enro in Enro TZ is metabolized to Ciprofloxacin. First Enro kills susceptible bacteria and then Ciprofloxacin its metabolite. Effective against Gram +ve, Gram -ve Bacteria & Mycoplasma. Tinidazole in Enro TZ kills Protozoa, Giardia, Trichomonas, Coccidia and against obligate anaerobic bacteria.



YOUR PERFECT ANIMAL HEALTH PARTNER

S I N C E 2 0 0 7

Towards 100 Crore sales...

### Kevinjo Pharmaceuticals(P)Ltd.

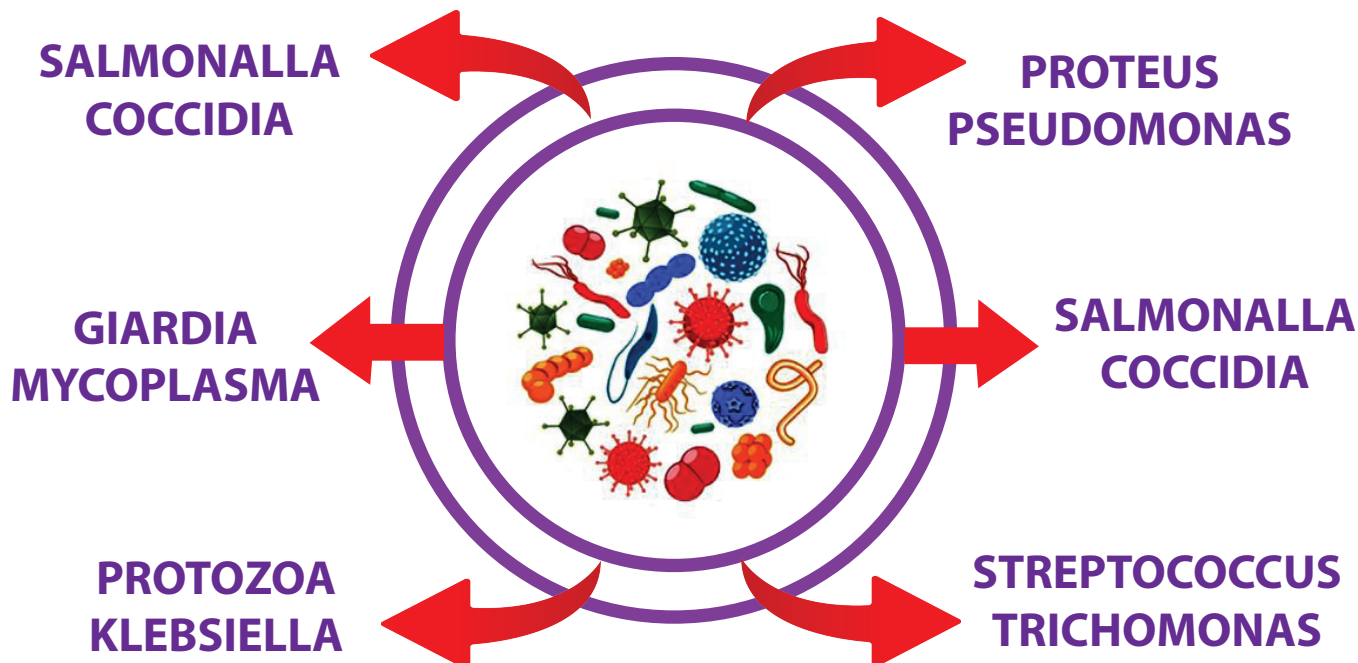
330/1560/M-N,Chakaraparambu road

Vennala P.O,Kochi-682028

Ph- 0484 2809547, +91 94956 73313

[www.provetindia.com](http://www.provetindia.com) [provetindia@gmail.com](mailto:provetindia@gmail.com)

India / Nepal / Bangladesh / St.Lucia (South America)



**SURE RESULTS !!!  
ENROFLOXACIN & TINIDAZOLE COMBO**

**Enro-TZ**

**ENRO-TZ BOLUS  
ENRO -TZ TABLETS  
&  
ENRO-TZ ORAL SYRUP**



**WHATEVER THE PATHOGENS**

**Indications:**

Diarrhoea, Enteritis, Coccidiosis, Mastitis, Metritis, Endometritis, Lung abscess , aspiration pneumonia, CRD, Coryza, Cellulitis, abscesses, Gangrene, Surgical Prophylaxis, surgical wound infection, Secondary bacterial infection, Any bacterial infection, when clinical picture is not clear.

**Enro TZ Oral Syrup**

**Composition:**

Enrofloxacin 100mg, Tinidazole 180mg

**Dosage:**

Cattle, Sheep & Goats :  
0.5ml-1ml/Kg. B. Wt. to be given orally  
for 3-5 days

For IU use : 30-60ml Intrauterine

Poultry : 1ml- 1 to 2 litre of drinking water  
to be given orally for 3-5 days.

**Enro TZ Tablets:**

**Composition :**

Enrofloxacin 150mg, Tinidazole 180mg

**Dosage :**

Dog, Calf, Goat and small animals:  
1 tablet twice a day/15 Kg. B. Wt.

**Enro TZ Bolus**

**Composition :**

Enrofloxacin 1500 mg, Tinidazole 1800 mg

**Dosage :**

Cattle:1-2 Bolus twice a day/300 Kg. B. Wt.

